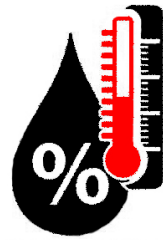




INNOVATIVE MOSAIC

Installation Guidelines

Tools | Materials | Substrates
Processes | Edge Finishing



40%-60%



60-80°F
15-27°C



Caution

This box contains

MOISTURE & TEMPERATURE SENSITIVE CONTENT

- Keep Dry.
- Storage temperatures of 60-80 degrees Fahrenheit and 40-60% relative humidity.
- Do not expose to direct heat or sunlight.
- Installation must take place within one (1) year to ensure best polymer results.

Dry-lay the mosaic and make sure everything lays out and fits properly.
When dry-laying individual sheets (e.g. layout on floor before installation) – be sure the floor surface is clean and not releasing humidity, which can re-activate the tile sheet mounting adhesive (i.e concrete or porous surfaces).

CUSTOMER INSPECTION & STORAGE:

Customer is responsible for inspecting the mosaic upon receipt, and properly storing the mosaic prior to installation. Artac is not liable for mosaic issues including but not limited to mosaic damage, grout offset, loss of polymer adhesiveness, etc., thirty (30) days after customer receipt of the mosaic. In the event that replacement mosaic is requested for any reason more than thirty (30) days after customer receipt of the original mosaic, the customer must purchase replacement sections at current pricing to be determined at the time of the replacement request. Matching tile color and finish to the original mosaic cannot be guaranteed.

STANDARD INSTALLATION

Primary Installation Tools



Notched Edge
Trowel **Suggested:**
1/6", 1/8" or
3/16" Notch



Rubber Grout Float



Microfiber Sponge



Razor Blades



Water Buckets



Paint Brush Or
Roller ***

Primary Installation Materials

Setting Material



Cementitious or epoxy-based thin-set material.

Suggested:
Glass Tile:
BOSTIK GLASS-MATE™
MORTAR with BOSTIK 425™

Porcelain & Stone Tile:
BOSTIK REFLEX®
***For Exterior or Submerged
Applications

Mosaic Tile and Installation Guide



Labeled sheets of Artaic mosaic tile and the provided installation plot plan diagram. Both are labeled row then column and top to bottom.

Artaic tile repair kit

Grout



Unsanded cementitious, epoxy or urethane-based

Suggested:
BOSTIK TRUCOLOR® RAPID-CURE™
DIMENSION® RAPIDCURE™
HYDROMENT VIVID™
EZPOXY EZCLEAN™

Water-Proofing/Anti-fracture Membrane ***



Suggested:
BOSTIK GOLDPLUS™

*** Required if the mosaic is to be installed on a surface submerged in water, or anti-fracture or crack isolation properties are necessary.

STANDARD INSTALLATION

Installation Notes

- All Artaic mosaic installations should follow the applicable TCNA and ANSI installation standards for each installation.
 - It is the user's responsibility to determine the condition and suitability of all surfaces before application.
 - Tape is adhered to the front face of the mosaic sheets. DO NOT install this side into the setting material.
 - **Carefully read all instructions before starting installation.**
 - Please read and follow all specific installation product guidelines and specifications.
 - Installation should be performed in air temperatures between 41 °F minimum and 86 °F maximum.
 - The spacing between sheets should equal the tile joint spacing.
 - The mosaic installer should use their best judgement and test the install on a small section of the substrate to gauge results. The tile material, substrate, and wall preparation can all effect which trowel size will be best for the installation.
 - Client or their installer should preview WARRANTY 10.1 By Artaic – Goods & Services. Artaic warrants that the deliverable(s) furnished under this agreement shall materially conform to the Project Proposal and will be free from defects in material or workmanship. Artaic warrants that the Service(s) will be performed in a professional and workman-like manner. Artaic agrees to replace or correct defects of any Deliverable(s) or Service(s) not conforming to the foregoing warranty promptly without expense to Client when notified of such nonconformance by Client. Notification shall be in writing and include photographic documentation of defects, and final determination made solely by Artaic. Client should preview their mosaic .
-

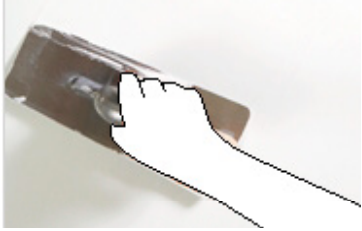
Installation Preparation & Substrate Information

- Carefully assess the installation surface remembering that different substrates can require different preparation.
- Installation surface should be a smooth uniform plane. Installation on a highly varied surface will be difficult and will cause undesirable results. **SEE STEP 1 FOR SKIMMING INSTRUCTIONS.**
- For newly built wall applications, the wall's drywall is an adequate substrate to receive the mosaic.
- For existing wall or floor applications where the surface is structurally questionable or has a highly varied plane that will compromise the mosaic installation, add a layer of backer board, such as Durock, to serve as the substrate to receive the mosaic.
- If possible, dry fit mosaic sheets and inspect before installing.
- Artaic has an extensive QC process. Tile is inspected prior to fabrication; inspected during fabrication and the completed 1' x 1' sheets of mosaic are reviewed against the approved digital design. Occasionally damages to the tile may occur during the shipping process. If the installer comes across overly chipped tiles these should be removed and replaced using the Artaic repair kit sent with the mosaic.
- Additionally, if the installer feels that a tile looks out of place they should use their discretion to replace that tile with an appropriate color. This can done during the dryfit process or after the polymer mount has been removed and prior to grouting. Just pop out the out of place tile and replace with one that feels more appropriate.



STANDARD INSTALLATION

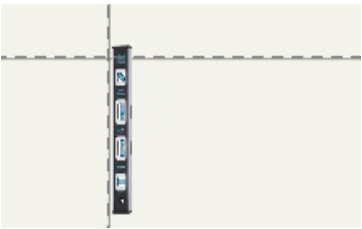
1. SKIMMING



- The installation surface must be smooth and clean to ensure proper installation.
- It may be necessary to apply a thin layer of patching compound on the surface. Maximum allowable variation is 1/8" in 10 feet from the required plane, with no more than 1/16" variation in 24" when measured from the highest point in the surface.
- Allow 12 hours to dry if a layer of patching compound is applied.

NOTE: A waterproofing/anti-fracture membrane needs to be applied to the uniform surface if the mosaic is to be submerged in water, or if anti-fracture or crack isolation properties are necessary. This typically consists of rolling or spraying a liquid, rubbery membrane onto the uniform surface prior to mosaic installation. Please follow manufacturer's instructions on waterproofing membrane application.

2. GUIDE LINES



- Measure the space in which the mosaic is being installed to determine the best fit for your tile.
- Use a straight edge and level to help you align the tile as you work.
- For large installations a laser level and chalk lines are required.
- Construct a grid on the substrate that is equal to 3 foot x 3 foot (9 sheets) of mosaic area.

NOTE: Be sure to account for the spaces between each sheet of tile when measuring.

3. APPLYING SETTING MATERIAL



- Mix setting material.
- Key in mortar: apply setting material with the smooth edge of a trowel to a section no larger than one section of the grid.
- Combing mortar: create even parallel ridges in the setting material by "combing" the material with the notched edge of the trowel.
- Do not allow setting material to skin over while installing mosaics.
- Please reference Bostik technical data sheets for Installation instructions.

4. INSTALLING



- The sheets of mosaic may have a clear tape covering on the front face of the tile. This allows the mosaic design to be seen during installation. Paper face mounting may also be used. Additional guidelines are attached for alternate mounting methods.
- Apply the backside of each sheet into the setting material, with the tape side face out.
- Using a float tool, tap across the surface to adhere the mosaic securely into the setting material.

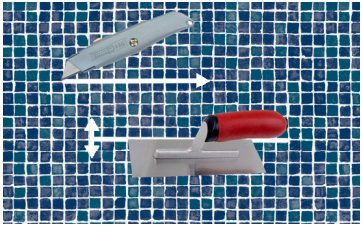
5. SECURING SHEETS



- It is important to create a secure bond between the tiles and the setting material.
- Using the float tool tap across the surface to adhere the mosaic securely.
- This also ensures the final exposed plane of the mosaic is consistent and uniform in height.

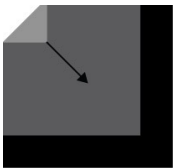
STANDARD INSTALLATION

6. ADJUSTING THE SPACING



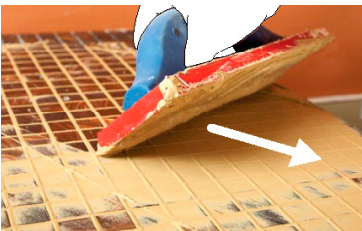
- This can be a time consuming process, but is important to ensure a professional installation.
- Adjust while material is still wet.
- Adjust any tiles that are uneven and ensure that all gaps are of equal width and height. Do this by cutting through the clear tape and moving tiles with a small trowel.

7. REMOVING POLYMER, FACE-MOUNTED TAPE



- Pull tape away in a diagonal motion off of the tile.
- Do not pull the polymer directly away from the tiles. Pull back along the surface of the tile, reducing the force pulling tiles away from the adhesive.
- Note that if you had to adjust any spacing of the tiles by cutting the polymer tape, there may be strips or squares of polymer tape pulling tiles away from the adhesive. Make sure to inspect for this.

8. GROUTING



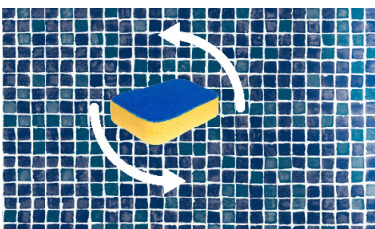
- Before applying grout be sure that the mosaic surface is clean and all clear tape is removed from the tiles. Grout can be applied to a clean, dry surface. (See Step 9 "Expansion Joints").
- Thorough cleaning may involve removing excess setting material from the mosaic's joints with a knife, as well as cleaning off all dust and particles.
- Spread from the bottom up in a diagonal direction using a small trowel. Squeegee in the opposite direction.
- Please reference Bostik technical data sheets for installation instructions
- It is important to follow the Bostik's technical data sheets for cleaning instructions, as some products are clean as you go and some are not.

9. EXPANSION JOINTS (SEE EDGE FINISHING SECTIONS AT END OF GUIDELINES)



- Expansion joints should be installed at all "changes in plane" of the mosaic and where the mosaic meets an adjoining surface, such as in a corner. Fill the space(s) with a silicone caulking sealant in place of grout to create expansion joints at these locations.
- Follow TCNA Movement joint specifications EJ171.
- Schluter edge systems are recommended.

10. CLEANING



- The mosaic should be ready to be cleaned about 30-60 minutes after grouting.
- Use a microfiber sponge and clean water and scrub in a circular motion, removing excess grout and smoothing all joints. Continue to wipe down the tiles until clean.

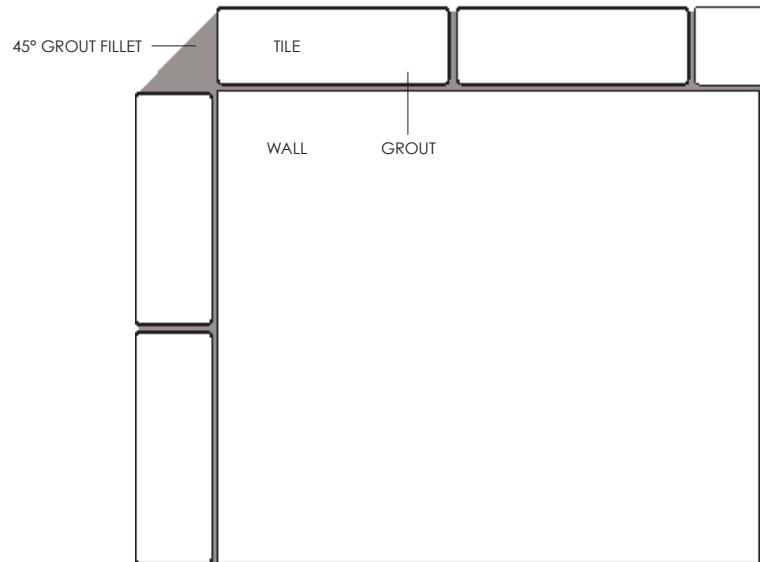
NOTE: Cleaning methods vary based upon the type of grout used in the installation. For example, a urethane grout must be cleaned earlier and more frequently than cementitious grout. Please follow the cleaning instructions provided by the grout manufacturer.

STANDARD INSTALLATION

EDGE FINISHING- SPECIALTY PRODUCTS (RECOMMENDED)

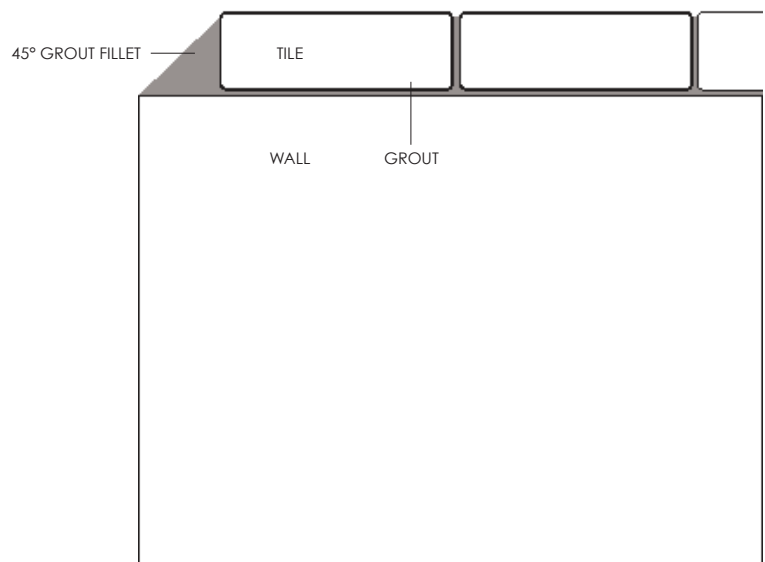
FILLET OPTION 1: TILE - TILE CORNER WRAP

- Corner finish created with grout smoothed to 45° angle using float.
- Fill exposed corner gap between changes in planes with grout.
- Drag float from top of corner downward, creating a flat, finished plane of grout.



FILLET OPTION 2: TILE EDGE FINISH / FLUSH TO CORNER

- Edge of tile finish created with grout smoothed to 45° angle using corner of float or finger.
- Fill edge of tile with grout.
- Drag corner of float from top of mosaic edge downward, creating a finished 45° plane between tile and the wall/corner.

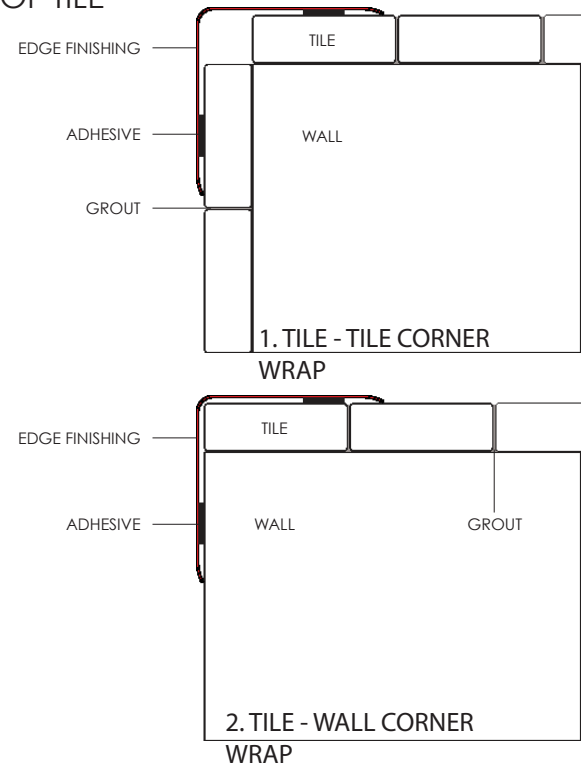


STANDARD INSTALLATION

EDGE FINISHING

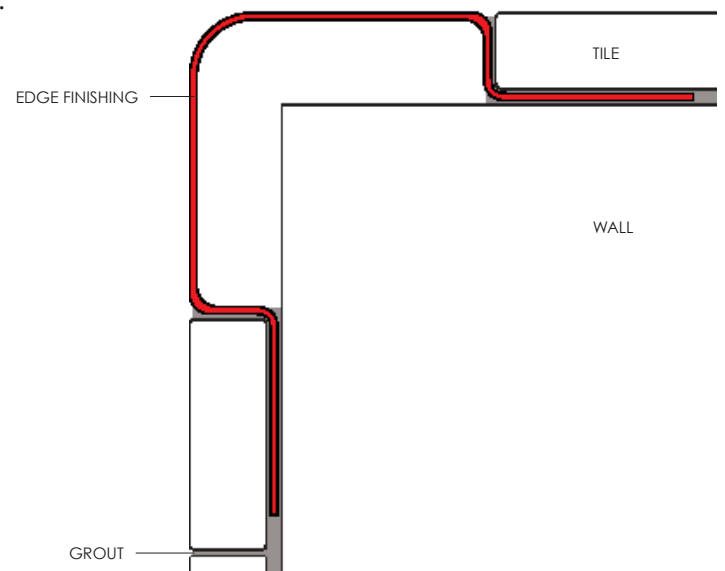
PRODUCT OPTION 1: WRAPPING CORNERS ON EXTERIOR OF TILE

- Edge finishing attached to face of tile with adhesive.
- For use in following application scenarios:
 1. TILE - TILE CORNER WRAP
 2. TILE - WALL CORNER WRAP



PRODUCT OPTION 2: WRAPPING CORNERS - FLUSH WITH TILE FACE

- Edge corner finishing.
- Edge facing flush with tile facing.
- Finishing mounted beneath tile, within bed of mortar.
- For use only in a Tile - Tile Corner Wrap application.

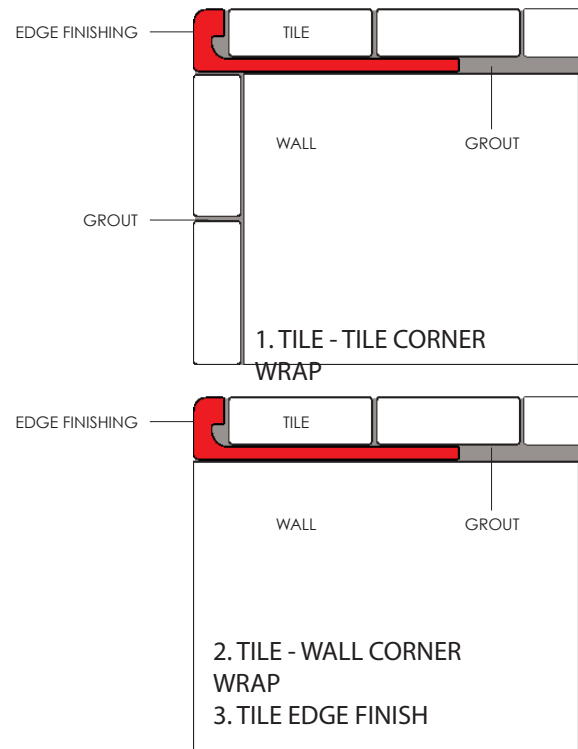
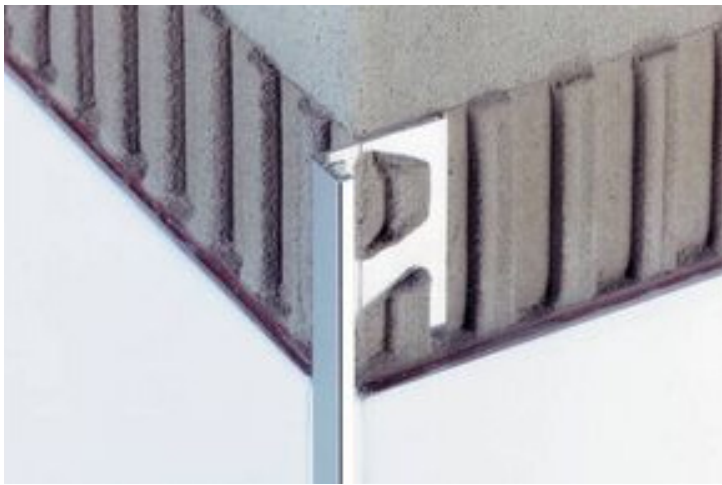


STANDARD INSTALLATION

EDGE FINISHING

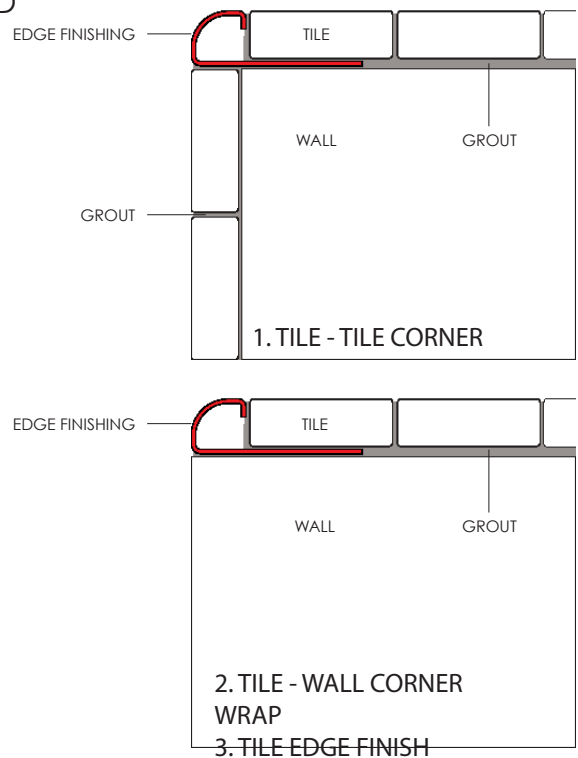
PRODUCT OPTION 3: TILE EDGE / CORNER WRAP - FLAT

- Finishing mounted beneath tile, within bed of mortar.
- For use in following application scenarios:
 1. TILE - TILE CORNER WRAP
 2. TILE - WALL CORNER WRAP
 3. TILE EDGE FINISH



PRODUCT OPTION 4: TILE EDGE / CORNER WRAP - ROUND

- Finishing mounted beneath tile, within bed of mortar.
- For use in following application scenarios:
 1. TILE - TILE CORNER WRAP
 2. TILE - WALL CORNER WRAP
 3. TILE EDGE FINISH

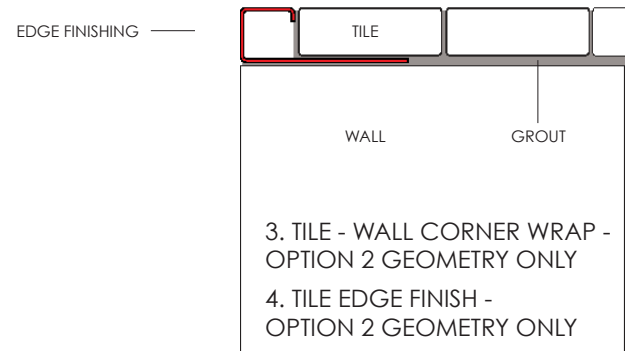
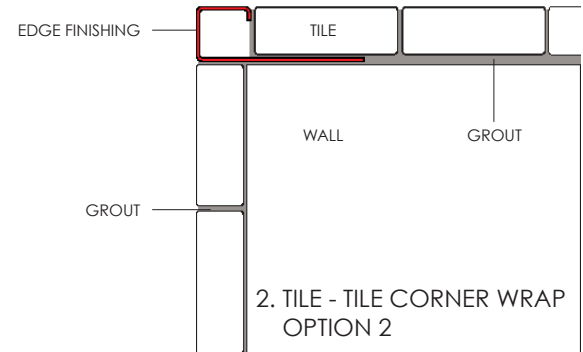
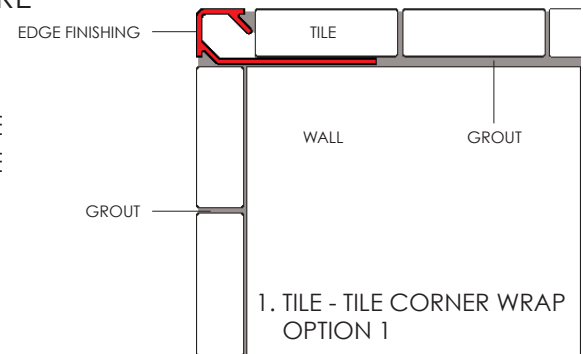


STANDARD INSTALLATION

EDGE FINISHING

PRODUCT OPTION 5: TILE EDGE / CORNER WRAP - SQUARE

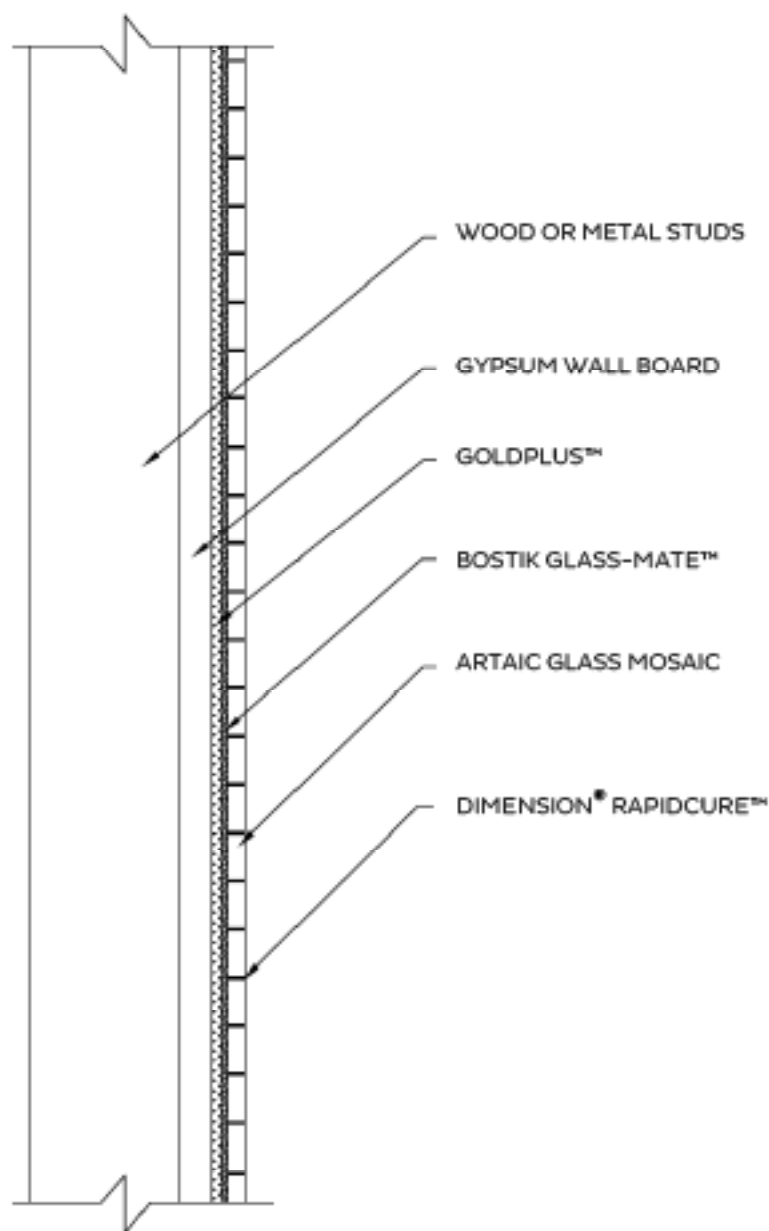
- Finishing mounted beneath tile, within bed of mortar.
- For use in following application scenarios:
 1. TILE - TILE CORNER WRAP - OPTION 1 FOR $< 3/8$ " THICK TILE
 2. TILE - TILE CORNER WRAP - OPTION 2 FOR $> 3/8$ " THICK TILE
 3. TILE - WALL CORNER WRAP - OPTION 2 GEOMETRY ONLY
 4. TILE EDGE FINISH - OPTION 2 GEOMETRY ONLY





ARTAIC GLASS MOSAIC

WITH MOISTURE MEMBRANE



SYSTEM NOTES:

WOOD STUDS - DRY AND WELL BRACED, MINIMUM DEPTH OF 3-1/2"

METAL STUDS - WELL BRACED, 20 GAUGE OR HEAVIER; MINIMUM DEPTH OF 3-1/2" FOR RESIDENTIAL OR 3-5/8" FOR COMMERCIAL.

SURFACE OF UNITS - CLEAN AND FREE OF DIRT, DUST, PAINT, AND OILY FILM.

BOSTIK 425™ ADMIXTURE MAY BE USED INSTEAD OF WATER WITH BOSTIK GLASS-MATE™.

NOTES:

DRAWING NOT TO SCALE.

REFER TO BOSTIK'S TECHNICAL DATA SHEETS FOR APPLICATION AND INSTALLATION REQUIREMENTS.

REFER TO THE TILE MANUFACTURER FOR APPLICATION AND INSTALLATION REQUIREMENTS.

BOSTIK TECHNICAL DATA SHEETS ARE SUBJECT TO CHANGE WITHOUT NOTICE, FOR MOST CURRENT VISIT WWW.BOSTIK-USA.COM.

INSTALLATION VIDEOS CAN BE VIEWED AT WWW.YOUTUBE.COM/USERS/BOSTIKUSA.

BOSTIK HOTLINE™

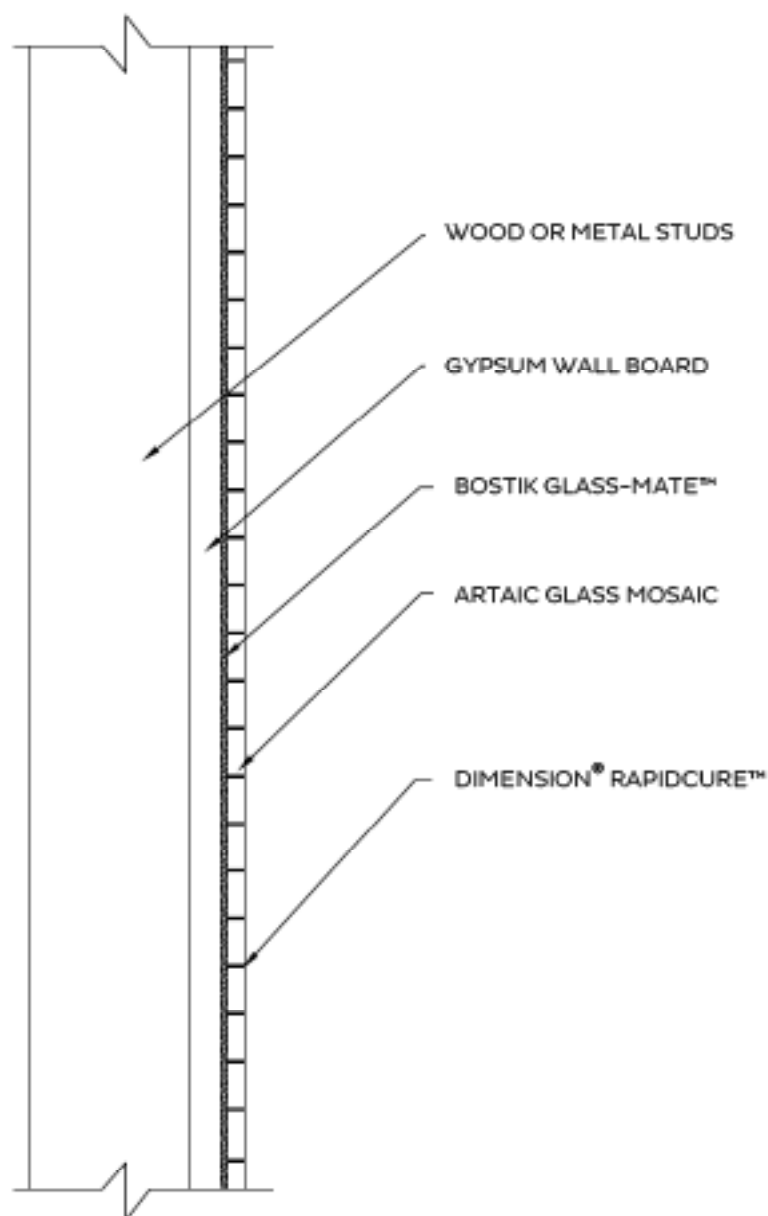
Smart help™
1-800-726-7845

Bostik, Inc.
11320 W. Watertown Plank Road
Wauwatosa, WI 53226
www.bostik-us.com





ARTAIC GLASS MOSAIC



SYSTEM NOTES:

WOOD STUDS - DRY AND WELL BRACED, MINIMUM DEPTH OF 3-1/2"

METAL STUDS - WELL BRACED, 20 GAUGE OR HEAVIER; MINIMUM DEPTH OF 3-1/2" FOR RESIDENTIAL OR 3-5/8" FOR COMMERCIAL.

SURFACE OF UNITS - CLEAN AND FREE OF DIRT, DUST, PAINT, AND OILY FILM.

BOSTIK 425™ ADMIXTURE MAY BE USED INSTEAD OF WATER WITH BOSTIK GLASS-MATE™.

NOTES:

DRAWING NOT TO SCALE.

REFER TO BOSTIK'S TECHNICAL DATA SHEETS FOR APPLICATION AND INSTALLATION REQUIREMENTS.

REFER TO THE TILE MANUFACTURER FOR APPLICATION AND INSTALLATION REQUIREMENTS.

BOSTIK TECHNICAL DATA SHEETS ARE SUBJECT TO CHANGE WITHOUT NOTICE, FOR MOST CURRENT VISIT WWW.BOSTIK-US.COM.

INSTALLATION VIDEOS CAN BE VIEWED AT WWW.YOUTUBE.COM/US/BOSTIKUSA.

BOSTIK HOTLINE™

Smart help™
1-800-726-7845

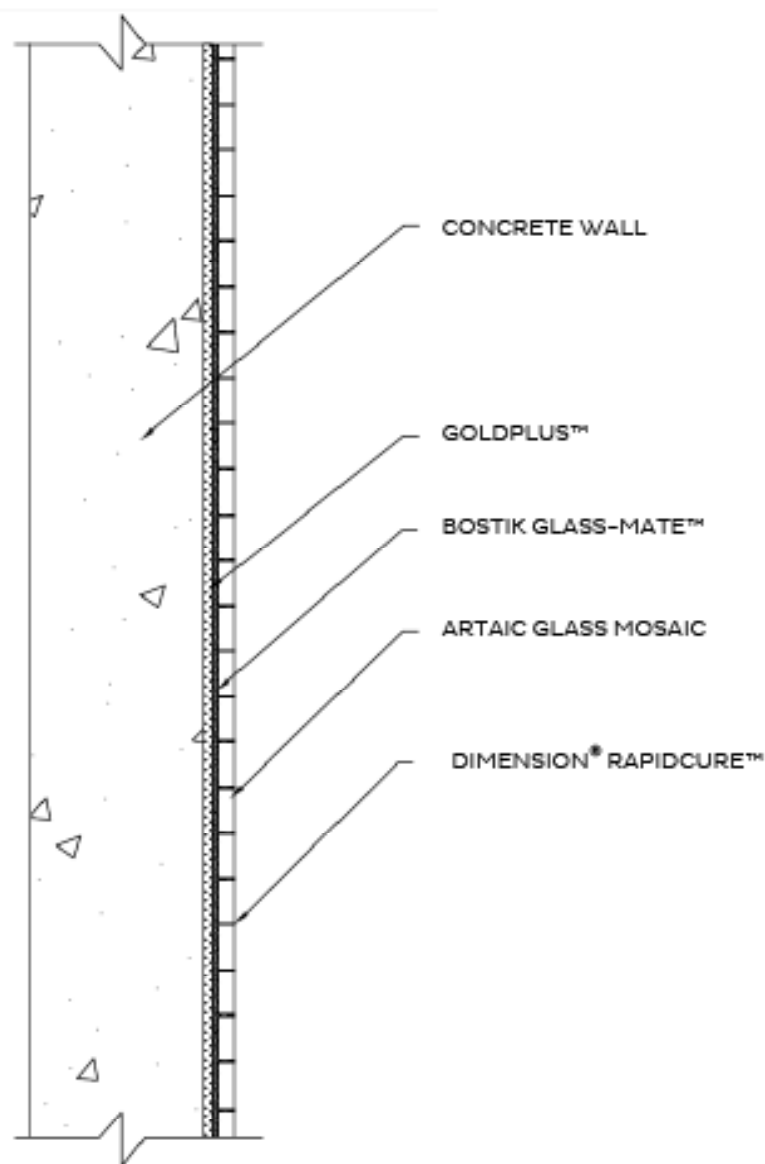
Bostik, Inc.
11520 W. Watertown Plank Road
Wauwatosa, WI 53226
www.bostik-us.com





ARTAIC GLASS MOSAIC

WITH MOISTURE MEMBRANE



SYSTEM NOTES:

SURFACE OF UNITS - CLEAN AND FREE OF DIRT, DUST, PAINT, AND OILY FILM.

BOSTIK 425™ ADMIXTURE MAY BE USED INSTEAD OF WATER WITH BOSTIK GLASS-MATE™.

NOTES:

DRAWING NOT TO SCALE.

REFER TO BOSTIK'S TECHNICAL DATA SHEETS FOR APPLICATION AND INSTALLATION REQUIREMENTS.

REFER TO THE TILE MANUFACTURE FOR APPLICATION AND INSTALLATION REQUIREMENTS.

BOSTIK TECHNICAL DATA SHEETS ARE SUBJECT TO CHANGE WITHOUT NOTICE, FOR MOST CURRENT VISIT WWW.BOSTIK-US.COM

INSTALLATION VIDEOS CAN BE VIEWED AT WWW.YOUTUBE.COM/USERS/BOSTIKUS

BOSTIK HOTLINE™

Smart help™
1-800-726-7845

Bostik, Inc.
75320 W. Watertown Plank Road
Wauwatosa, WI 53226
www.bostik-us.com



BACKLIT INSTALLATION

Primary Installation Tools

1	Notched edge towel, suggested - 1/16" V notch	9	Mixing tool/drill (used to evenly mix activator & base)
2	Rubber grout float	10	Artaic's Special Translucent Grout
3	Grout sponges	11	Artaic's backlit formula C proprietary adhesive
4	Water buckets (5 gallon)	12	Dispoable scoops (2X)
5	Clear Substrate to adhere mosaic (suggested - 1/2" or 3/4" multi wall polycarbonate)	13	Mosaic tile sections
6	Digital scale	14	Sharpie/ Markers
7	Latex gloves	15	Acetone and Alcohol
8	Small plastic bucket		

Installation Notes

- Label side of the mosaic sheets should be facing you during installation.
- Please read and follow all specific installation product guidelines and specifications.
- Installation should be performed in air temperatures between 41° F minimum and 86° F maximum.
- The space between sheets should equal the space between tiles.

Installation Notes

STEP 1: Perform a dry assembly of mosaic sheets on the clear substrate with proper spacing between the sections. Refer to installation diagram & labels on the mosaic sheets to ensure they are being assembled in the correct orientation and order.

STEP 2: Once all sections are on a clear substrate, mark the border and remove any excess substrate to align the mosaic sheets and substrate. Artaic recommends each substrate to be 4' X 8' for easy assembly.

STEP 3: Prepare the Surface.

- A clean, dry surface is a necessary prerequisite for adhesive bonding.

Common translucent substrates:

- Polar Thermoplastics (Nylon, ABS, Polycarbonate, Acrylate, Lexan).
- Acrylic Glass (Perspex, Resartglas, Plexiglas)
- Glass

For Polar Thermoplastics (Nylon, ABS, Polycarbonate, Acrylate, Lexan):

Supplies:

1) Acetone, Methyl ethyl ketone or Trichloroethylene degreasing solvent. A safer/greener alternative to trichloroethylene degreaser is the 3M Novec series of cleaning solutions: http://solutions.3m.com/wps/portal/3M/en_WW/3MNovec_LA/Home/Applications/PrecisionCleaning/PrecisionOptics/.

BACKLIT INSTALLATION

- 2) Clean cotton cloth rags. (Three rags per 1 sq.m. of installation)
- 3) Emery cloth sandpaper with grit anywhere in the 300-600 grit range.
- 4) Preferred but optional: Electric orbital sander for the Emery paper (strongly advised for larger surfaces)

Degreasing procedure:

- 1) Wipe bonding surfaces with clean cloth saturated with degreasing solvent. Allow piece(s) to thoroughly dry.
- 2) Abrade bonding surface to allow for greater adhesion. Use Emery cloth sandpaper (grade 300-600). Artaic recommends an orbital sander with light-medium pressure application, or use a hand sanding application in a random direction sanding pattern.
- 3) Wipe Plexiglass bonding surfaces with clean cloth saturated with degreasing solvent again. Make sure any oils or release agent residues are removed. Allow piece(s) to thoroughly dry.
- 4) Wipe back side of glass tile mosaic sheets with clean cloth (with small amount of solvent in the cloth). Gently wipe across back surface (do not press firmly enough to release solvent from cloth). Important: Do not allow solvent to reach front side of tile where solvent would dissolve clear polymer front tile adhesive. Allow piece(s) to thoroughly dry.

Note: Bonding of surfaces should be done as soon as possible upon completion of any pretreatment procedure.

For Plexiglas Surface Preparation:

- Do not use Acetone or Methyl ethyl ketone
- Degrease with Trichloroethylene degreasing solvent.
- A safer/greener alternative to trichloroethylene degreaser is the 3M Novec series of cleaning solutions:
http://solutions.3m.com/wps/portal/3M/en_WW/3MNovec_LA/Home/Applications/PrecisionCleaning/PrecisionOptics/.

For Glass Surface Preparation:

- Degrease with 3M Novec cleaning solution.
- Optional: for a better adhesion result, use wire brush (stone), sandblast, or another method to abrade the glass surface
- Rinse with water and dry.

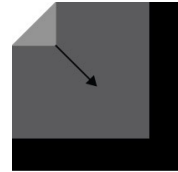
STEP 4: Process to Epoxy

- The installer should be wearing latex gloves while performing the steps mentioned below.
- Using a disposable scoop, scoop Artaic's Backlit Formula C Proprietary Adhesive Activator & Base as mentioned below and dump it in a disposable bucket. Use different scoops for base and activator.
 - o Mixing ratio Activator to Base by volume = 50 parts Activator, 100 parts Base
 - o 1 lb. of Base, ½ lb. of activator is sufficient to cover 9 Sq.ft. of mosaic sheets. We do not advise more than 9 Sq.ft.
 - o Pot life 1/20 Lbs. = 30 mins at 25° C
 - o Cure time: 4 hours to tack free, 24 hours to full cure
- Using mixing tool, mix the Activator and Base thoroughly
 - o Do not mix the Base and Activator if you do not plan to apply on the substrate immediately
 - o We recommend making epoxy in batches
- Ensure to clean the tools once mixing is done.

BACKLIT INSTALLATION

STEP 5: Application of Epoxy on a substrate

- Apply epoxy evenly across the substrate with trowel covering 9 Sq.ft. at a time.
- Place sections on the substrate. Stamp down the sections evenly with a float.
- Once all the sections are stamped down, let it cure (do not remove polymer prior to curing).
- After 24 hours, evaluate the epoxy to ensure it is fully cured before moving to the next step.
- If epoxy is fully cured, carefully start removing the polymer.



- If tiles pop out during polymer removal, use weldbond to secure them back on the substrate. Allow to cure for a few hours.

STEP 6: Grouting

- Refer to "Standard Installation Guidelines page 7" provided by Artaic for detailed grouting steps.

STEP 7: Cleanup

Sources:

- 1) Preparation of Surfaces for Epoxy Adhesive Bonding <https://www.smooth-on.com/page/preparation-surfaces-epoxy-adhesive-bonding/>
- 2) <https://en.wikipedia.org/wiki/Polycarbonate>
- 3) Plexiglas [https://en.wikipedia.org/wiki/Poly\(methyl_methacrylate\)](https://en.wikipedia.org/wiki/Poly(methyl_methacrylate)) Poly(methyl methacrylate) (PMMA), also known as acrylic or acrylic glass as well as by the trade names Plexiglas, Acrylite, Lucite, and Perspex